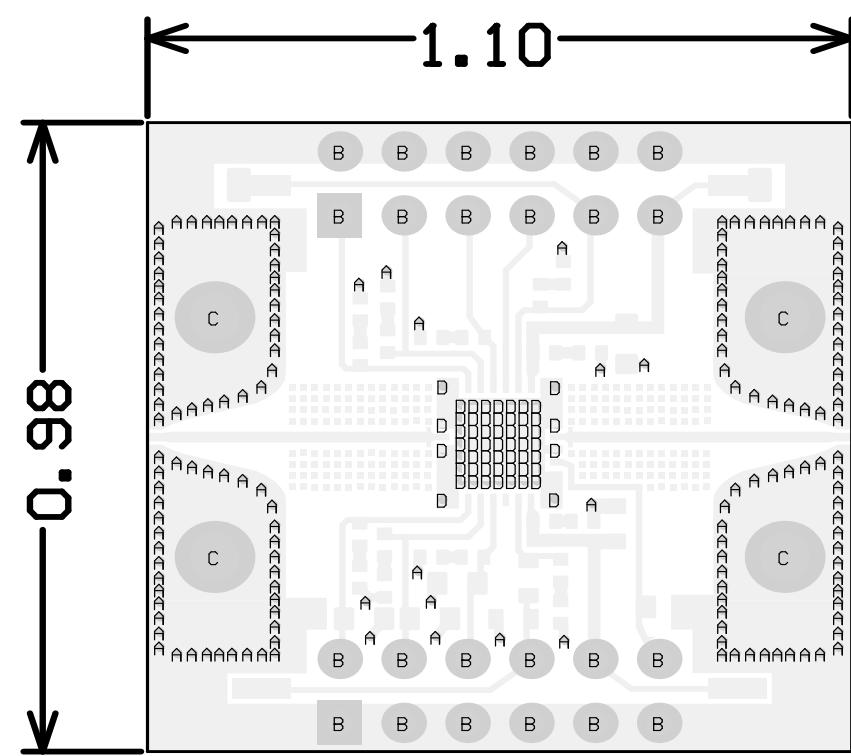


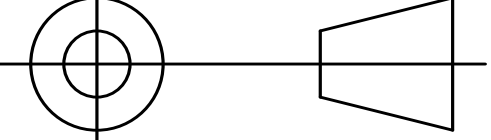
Symbol	Hit Count	Finished Hole Size	Tol.	Plated	Hole Type
A	166	6.00mil	+/- 3mil	PTH	Round
D	57	6.10mil	+/- 3mil	PTH AND FILL	Round
B	24	40.00mil	+/- 3mil	PTH	Round
C	4	78.00mil	+/- 3mil	PTH	Round
251 Total					

NOTES:

- MATERIAL:
R04003C: SEE DETAIL 'A'
STARTING COPPER FOIL ON TOP AND BOTTOM IS TO BE 0.5 OZ.
MATERIAL STACKUP AND THICKNESS PER DETAIL 'A'.
- THERE ARE THREE INTENTIONAL OPENS BY DESIGN ON NETS: VG, VD3 & VD4.
- FINISH:
EXPOSED METAL SHALL BE PLATED WITH ENIG, 2-8 MICRO-INCH THICK GOLD
OVER 118-236 MICRO-INCHES ELECTROLESS NICKEL PLATE PER IPC-4552.
THERE SHALL BE NO PITS, PIN HOLES OR NODULES WITHIN EXPOSED METAL AREAS.
STACKUP REPRESENTS FINISHED THICKNESS.
- PCB SHALL BE FABRICATED PER IPC-6012 CLASS 2 AND CONFORM TO IPC-A-600 CLASS 2 LATEST REVISIONS.
- ALL HOLES TO BE PLATED THRU UNLESS OTHERWISE SPECIFIED.
ALL FINISHED DRILL HOLE SIZES APPLY AFTER PLATING.
COPPER PLATING IN THROUGH HOLES WILL BE 0.002 AVERAGE WITH AN
ABSOLUTE MINIMUM OF 0.0007.
DIMENSIONS SHOWN ARE FOR LOCATION OF 0,0 FOR THE DRILL FILE.
- ELECTRONIC DATA IS EQUAL TO THE FINISHED LINE WIDTH.
- ALL 6.1 MIL VIA HOLES TO BE COMPLETELY FILLED WITH SOLID COPPER, AND PLANARIZED FLAT.
- ALL MATERIALS DESCRIBED IN THIS DOCUMENT/DRAWING SHALL BE IN COMPLIANCE WITH
AND CONTAIN NO SUBSTANCES RESTRICTED OR REQUIRING SPECIAL RECLAMATION UNDER
THE LATEST RoHS, WEEE OR ELV DIRECTIVES.
- SOLDERMASK SHALL BE SMOBC. LPI SOLDERMASK COATING SHALL CONFORM TO IPC-SM-840,
CLASS T. SOLDERMASK COLOR-GREEN.
- COPPER CLAD MUST EXTEND TO BOARD EDGE, ALL SIDES. DESIGN INTENDED
TO BE MANUFACTURED AS A SINGLE LAYER DOUBLE SURFACES.
- SILKSCREEN ON PRIMARY SIDE. SILKSCREEN SHALL BE WHITE
NON-CONDUCTIVE EPOXY INK. REMOVE ANY SILKSCREEN ON EXPOSED COPPER OR PADS.



PRIMARY LAYER

<div>UNLESS OTHERWISE SPECIFIED INTERPRET DRAWING PER ASME Y14.5 DO NOT SCALE THIS DRAWING</div>	<div>UNLESS OTHERWISE SPECIFIED DIMENSIONS ARE IN INCHES</div>		<div>MACOM</div> <div>WWW.MACOM.COM</div>		
	<div>TOLERANCES ON</div>				
	<div>DECIMALS</div>	<div>ANGLES</div>			
<div>NOTE: THIS DRAWING INCORPORATES THIRD ANGLE PROJECTION</div> <div></div>	<div>.X ± .1 .XX ± .02 .XXX ± .005 .XXXX ± .0005</div>	<div>± 0.5</div>	<div>TITLE</div> <div>FABRICATION, SMB MODULE</div> <div>5mmAQFN50P_32LD</div>		
<div>MACOM Technology Solutions CONFIDENTIAL INFORMATION SUBJECT TO NDA</div>	<div>UNLESS OTHERWISE SPECIFIED</div> <div>63/ ALL OVER</div>				
<div>The information contained in this document or material is the valuable and confidential property of MACOM Technology Solutions Holdings, Inc. and/or its subsidiaries or affiliates collectively MACOM, provided to you subject to a non-disclosure agreement between you and MACOM solely for use in supporting MACOM's business as and to the extent MACOM authorizes in writing from time to time. This information shall be held in strictest confidence and shall not be reproduced, published, disclosed to others, or used for any purpose except as and to the extent specifically authorized by MACOM in a separate written agreement. If permission is granted for reproduction, this legend must be included in any and all copies. This document or material shall be promptly returned to MACOM or destroyed upon request, completion of the use for which it was made available to recipient, or termination of MACOM's relationship with recipient, whichever first occurs.</div>			<div>SIZE</div>	<div>DRAWING NO.</div>	<div>REVISION</div>
<div>MATERIAL</div> <div>SEE NOTE 1</div>			<div>B</div>	<div>PT-0022058</div>	<div>D</div>
<div>FINISH</div> <div>SEE NOTE 3</div>			<div>SCALE:</div> <div>1/1</div>	<div>PACKAGE TYPE:</div> <div>5mmAQFN50P_32LD</div>	<div>SHEET 1 OF 1</div>

X	MAAP-011298
NEXT ASSY	USED ON
APPLICATION	